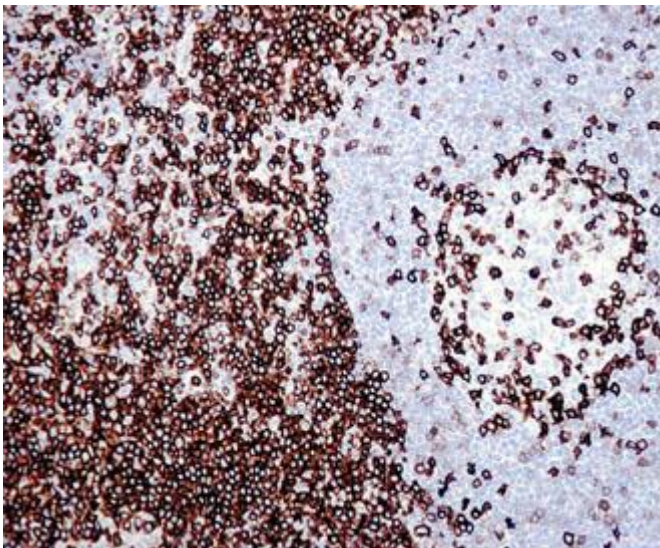
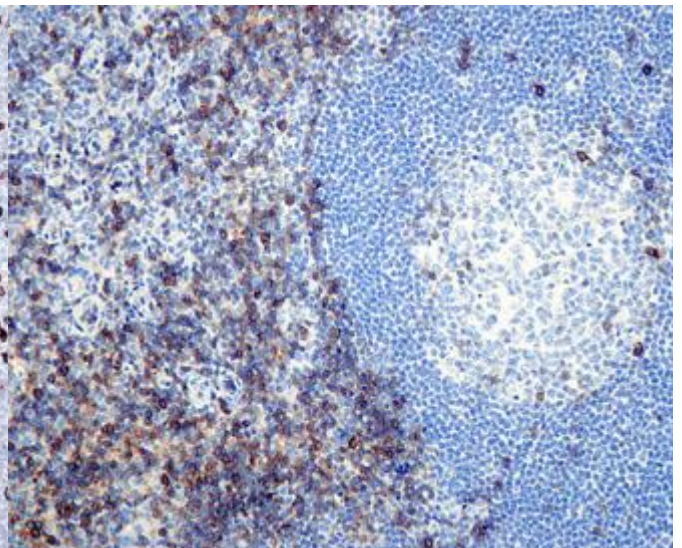


Nine laboratories participated. In a normal lymph node, seven laboratories got a good staining result, while two got an acceptable result. Staining a mantle cell lymphoma, the same seven laboratories got a good result, while the two got a poor result. The major causes for the latter was probably an insufficient antigen retrieval and weak Chromogen system.



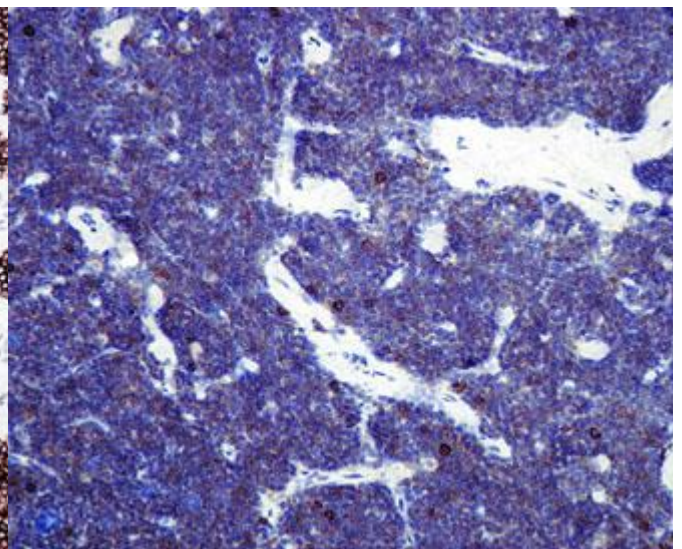
Lab a
CD5 staining of a normal lymph node using a good protocol. All T-cells are strongly stained. In the mantle zone a population of weakly stained cells are seen, probably B-cells.



Lab. B
CD5 staining of a normal lymph node (same field as in lab. a). The T-cells are moderately stained.



Lab a
CD5 staining of a mantle cell lymphoma using a good protocol. All neoplastic cells are strongly stained.



Lab b
CD5 staining of a mantle cell lymphoma (same field as in Lab. a) using an insufficient protocol. The neoplastic cells are difficult to discern, partly because of a weak staining, partly because of a heavy nuclear counterstaining.

SN/MV/LE 1-4-2007