

Differences between a good and a less optimized protocol are given. The probable cause for an unsatisfying staining of a small cell lung carcinoma is insufficient heat induced epitope retrieval.

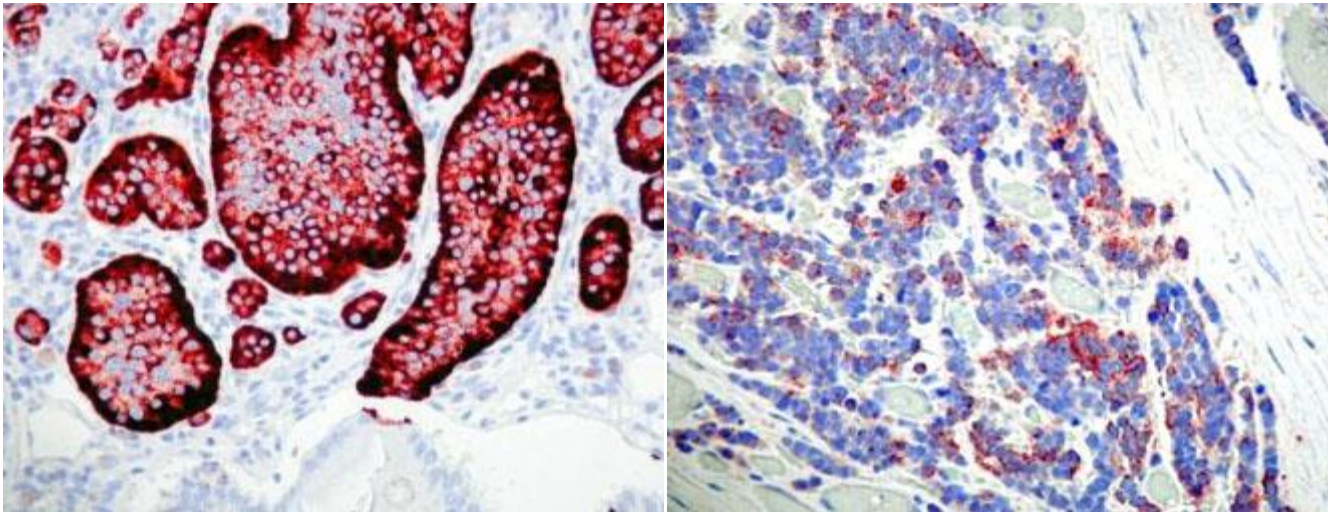


Fig. a
Stainings from a good protocol: To the left a small intestinal carcinoid, all tumour cells are strongly stained. To the right, a small cell lung carcinoma, in which most tumour cells reveal a faint dot like staining.

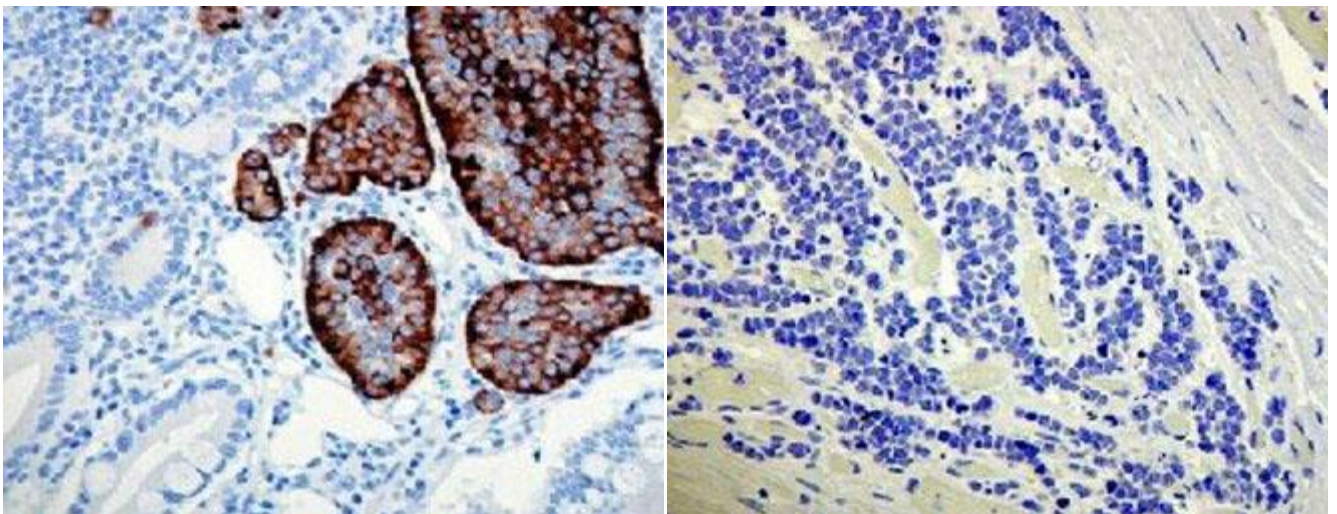


Fig. b
Stainings from a less optimized protocol (same fields as in a). To the left a strong staining of all tumour cells is seen. However to the right, the tumour cells are unstained.

SN/MV/LE 1-4-2007